

# 4000 ANSI Lumens 1080p Business Projector

**PG706HD**



- Full HD 1080p Resolution
- 4000 ANSI lumens
- Digital Vertical Lens Shift
- Dual HDMI
- Up to 20,000 lamp hour (SuperEco+ mode)

The ViewSonic PG706HD features 4000 ANSI lumens of brightness to project the finest of details in any ambient setting. High brightness and a Full HD 1920 x 1080 resolution provide you with perfect projection in any medium sized space, such as a meeting room or classroom. The PG706HD comes with an energy-saving SuperEco+ mode that reduces power consumption and extends lamp life to 20,000 hours, reducing the frequency of lamp replacement and lowering maintenance costs. In addition to dual HDMI, Video, S-Video, and VGA, the projector is integrated with RS232 and LAN, certified by Crestron, AMX, PJ Link and Extron networkable solutions, making it easy to control and monitor the projector remotely.

## Impressive Visual Performance

### Bright Images Every Time

Images on the PG706HD look bright under any lighting conditions thanks to a high brightness of 4000 ANSI Lumens meaning they won't get washed out during the day or with the lights on.

**4,000 ANSI Lumens**

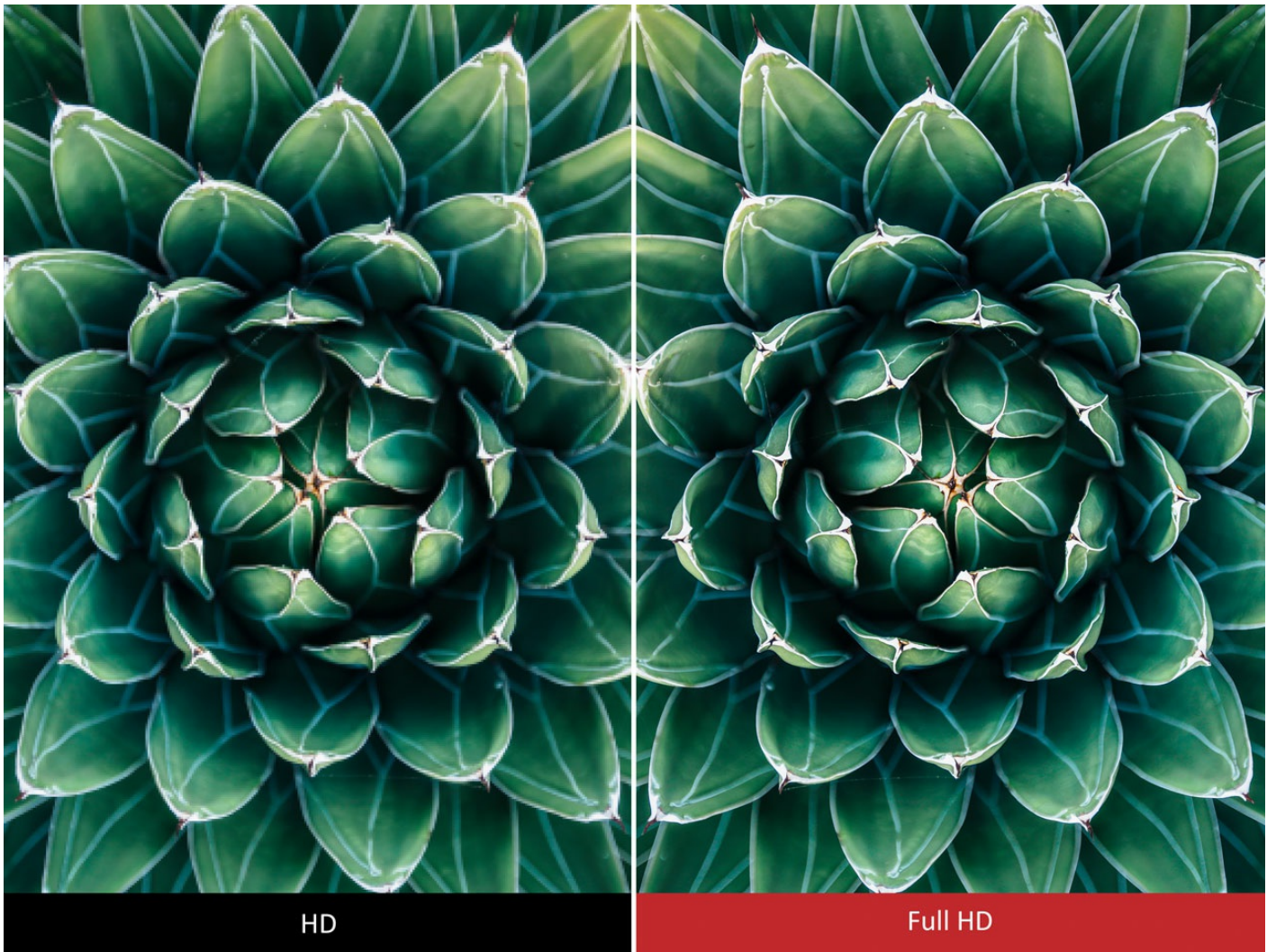


**4,000 ANSI Lumens**

## **Fine Detail and Clarity**

Full HD 1080p (1920 x 1080) resolution projection delivers clearly displayed information and ultra-sharp image quality.

**1080p Full HD**



## Vivid Colour Performance

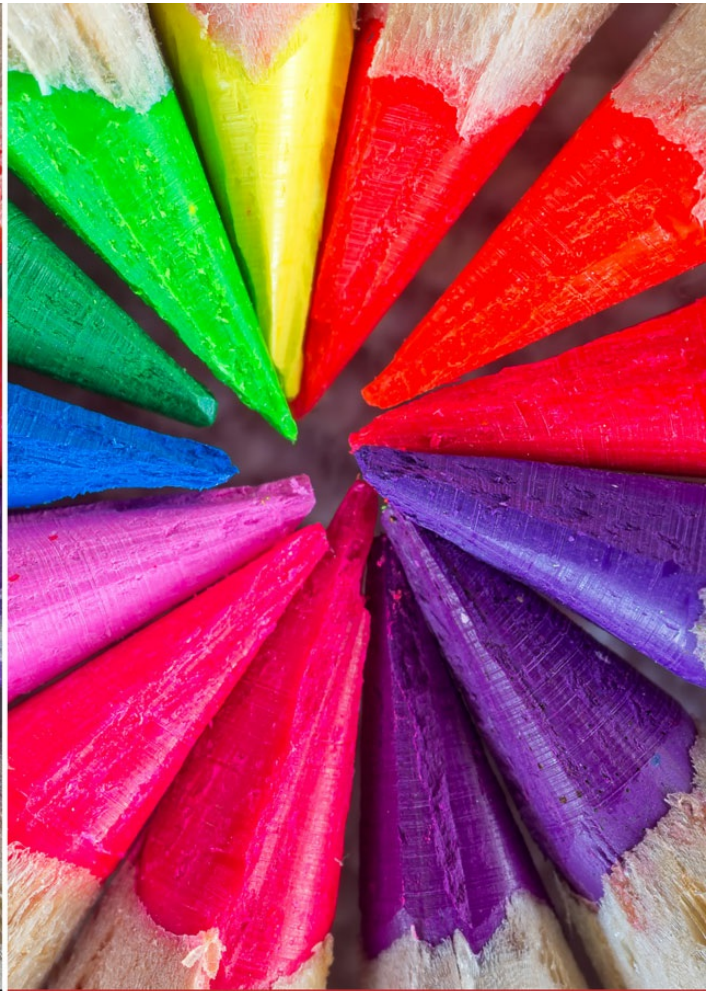
ViewSonic's proprietary SuperColor™ Technology displays a wide colour range, ensuring that users enjoy true-to-life colour performance in both bright and dark environments without sacrificing image quality.

**SuperColor™ Technology**





Normal



SuperColor™ Technology

## Ease of Use

## Flexibility in Image Projection

The PG706HD offers 10% flexibility of vertical image adjustment, so users can shift the image up or down without distorting the image with remote control, making installation quicker and easier.

### Vertical Lens Shift

5% ↑



5% ↓



## Energy-Efficient SuperEco+ Mode for a Lamp Life of up to 20,000 Hours

The latest SuperEco+ mode technology greatly extends the lamp life of the PG706HD from 15,000 hours to 20,000 hours of use with an input signal. That means it could be used 4 hours a day for more than 13 years with no degradation in brightness.

**20,000 Hours of Use**





## Immersive 3D Viewing

The PG706HD can project 3D content directly from 3D Blu-ray players and HDMI-enabled devices such as laptops, tablets, and media players via HDMI connection.

### HDMI 3D Blu-ray



## Extensive Connectivity

Dual HDMI ports provide enough connectivity to support any of your HDMI multimedia devices, delivering a big screen experience for any occasion.

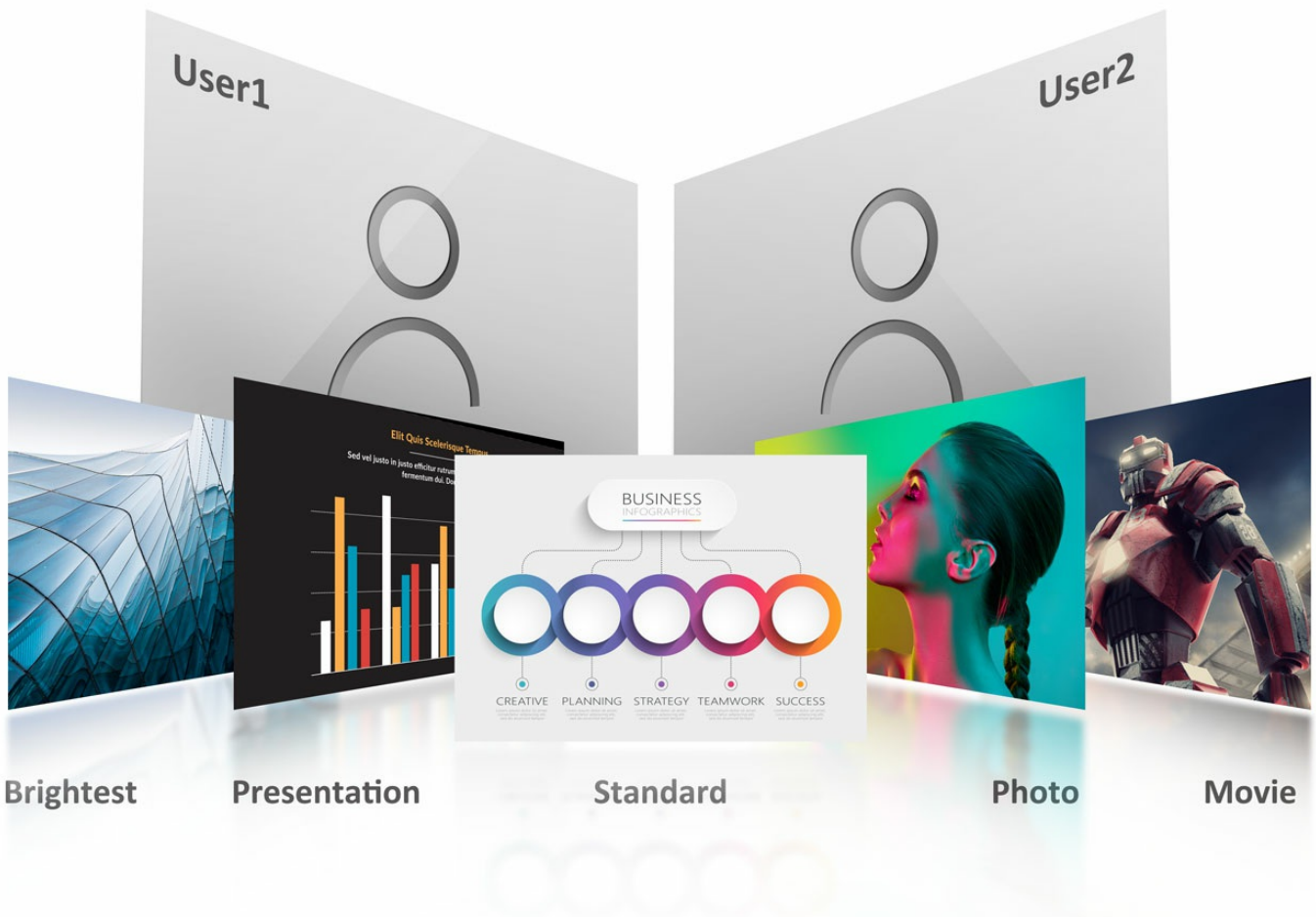
### Dual HDMI



## Customised User Modes for Your Colour Preference

Aside from ViewSonic's default picture mode, two extra user modes were added to ensure that users can save their preferred settings with a total of 7 colour modes.

### Customised User Modes



## Easy Central Management

The PG706HD is Creston, AMX, Extron, and PJLink certified, meaning it can be easily controlled and monitored remotely from a PC. I.T. personnel can manage up to 250 projectors at one time and control operations, such as scheduling through a LAN IP with an advanced, real-time alert system that sends status updates about power, usage hours, and unit location for simplified maintenance.

### LAN Control





250  
Projectors

## Instant Activation Upon Signal Detection

### Auto Power On



- Signal Power On: Power on automatically upon detection of a VGA or HDMI cable connection.
- Direct Power On: Connect the power cord to begin; the projector will power on all on its own once the cord is connected.

## 8 Control Codes from a Single Remote

This projector remote can be assigned 8 different control codes for effortless simultaneous projector selection, configuration, and operation during lessons and meetings. The remote can also operate certain projectors individually when codes are synced on both the projector and on the remote control.

### 1-to-8 Remote Control Code



## Integrated Power Source

A built-in 5V/1.5A USB power output can be used to supply power to HDMI wireless dongles, eliminating the need for separate power adapters when streaming your favourite multimedia content.

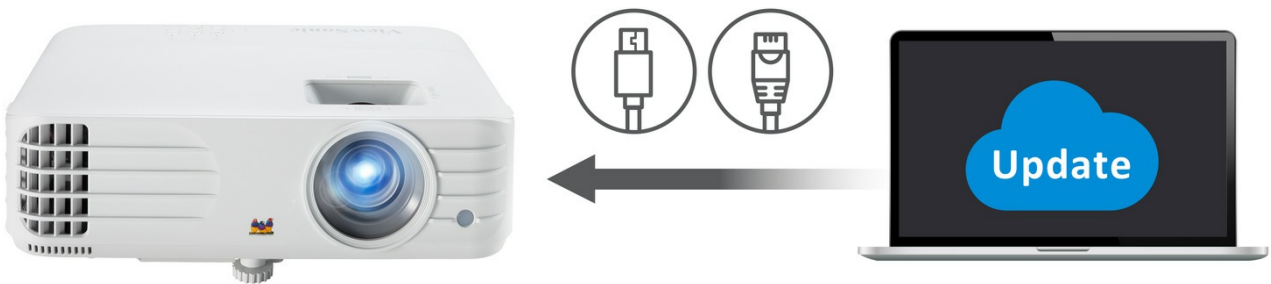
### USB Power Supply



## A Simpler Way to Update Projector Software

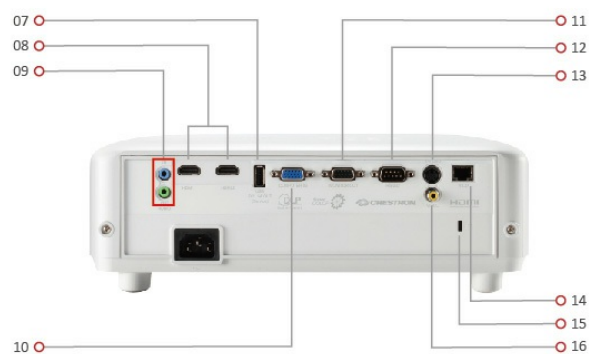
ViewSonic Projector Software Update is available online and gives you the ability to keep your projector firmware up to date easily and conveniently just by USB & LAN; no need to take your projector in to a service center for software updates.

### Projector Software Update



## I/O Connectivity





1. Keypad
2. LED Indicator
3. Lens
4. Power Keypad
5. Zoon/Focus
6. Front IR

7. USB Type A
8. HDMI Port
9. Audio In / Out
10. Computer In
11. Computer Out
12. RS-232
13. S-Video
14. RJ45
15. Kensington Lock
16. Video

## Technical Specifications

<b>Specification</b>	<b>Projection System</b>	0.47" 1080p	
	<b>Native Resolution</b>	1920x1080	
	<b>DMD Type</b>	DC3	
	<b>Brightness</b>	4000 ANSI Lumens	
	<b>Contrast Ratio with SuperEco Mode</b>	12000:1	
	<b>Display Color</b>	1.07 Billion Colours	
	<b>Light Source Type</b>	Lamp	
	<b>Light Source Life (Normal)</b>	4000	
	<b>Light Source Life (SuperEco)</b>	20000	
	<b>Lamp Watt</b>	245W	
	<b>Lens</b>	F=2.0~2.05, f=15.843-17.445mm	
	<b>Projection Offset</b>	110%+/-6%	
	<b>Throw Ratio</b>	1.5-1.65	
	<b>Optical Zoom</b>	1.1x	
	<b>Digital Zoom</b>	0.8x-2.0x	
	<b>Image Size</b>	30"-300"	
	<b>Throw Distance</b>	1.00m-10.96m (100"@3.32m)	
	<b>Keystone</b>	+/- 40° (V)	
	<b>Lens Shift V. Range</b>	Yes (+/- 5%)	
	<b>Audible Noise (Normal)</b>	32dB	
	<b>Audible Noise (Eco)</b>	27dB	
	<b>Input Lag</b>	16ms	
	<b>Resolution Support</b>	VGA(640 x 480) to WUXGA_RB(1920 x 1200) *RB-Reduced Blanking	
	<b>HDTV Compatibility</b>	480i, 480p, 576i, 576p, 720p, 1080i, 1080p	
	<b>Video Compatibility</b>	NTSC, PAL, SECAM	
	<b>Horizontal Frequency</b>	15K-102KHz	
	<b>Vertical Scan Rate</b>	23-120Hz	
	<b>Input</b>	<b>Computer in (share with component)</b>	1
		<b>Composite</b>	1
		<b>S-Video</b>	1
<b>HDMI</b>		2 (HDMI 1.4/ HDCP 1.4)	

	<b>Audio-in (3.5mm)</b>	1
	<b>RJ45 Input</b>	1 (LAN control)
<b>Output</b>	<b>Monitor out</b>	1
	<b>Audio out (3.5mm)</b>	1
	<b>Speaker</b>	10W
	<b>USB Type A (Power)</b>	1 (5V/ 1.5A)
<b>Control</b>	<b>RS232 (DB 9-pin male)</b>	1
	<b>RJ45</b>	1
<b>Others</b>	<b>Power Supply Voltage</b>	100-240V+/- 10%, 50/60Hz (AC in)
	<b>Power Consumption</b>	Normal: 355W Standby: <0.5W
	<b>Operating Temperature</b>	0~40°C
	<b>Net Weight</b>	2.79kg
	<b>Dimensions (WxDxH) with Adjustment Foot</b>	312x222x108mm
	<b>OSD Language</b>	English, French, Spanish, Thai, Korean, German, Italian, Russian, Swedish, Dutch, Polish, Czech, T-Chinese, S-Chinese, Japanese, Turkish, Portuguese, Finnish, Indonesian, India, Arabic, Vietnamese, Greek, Total 23 languages
<b>Standard Accessory</b>	<b>Power Cord</b>	1
	<b>VGA Cable</b>	1
	<b>Remote Control</b>	1 (w/ laser pointer)
	<b>QSG</b>	1
<b>Optional Accessory</b>	<b>Lamp/Light Source</b>	RLC-120