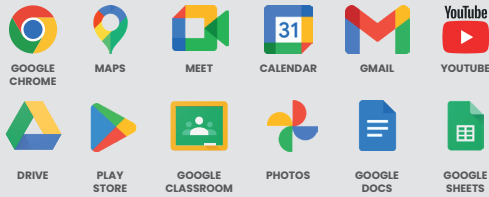


GoBoard Live

Native Apps



65" ADVANCED INTERACTIVE DISPLAY

Hisense Interactive Display solutions deliver unrivalled performance and market leading value. Combining the power of a digital display, tablet, electronic whiteboard and video conference device, Hisense delivers the ultimate all-in-one display solution. Superior processors and the latest touch technology provide best-in-class user experiences while seamless wireless integration makes collaboration both simple and engaging. The NEW 65MR6DE GoBoard Live display features Google Certification, Android 13 operating system and integrated 4K camera.

Highlights



4K Ultra HD Panel / 4K UI

The 4K Ultra HD picture quality ensures perfect colour and rich details in all possible surroundings. In addition to the 4K screen as always, we bring a 4K user interface for the GoBoard. With the 4K UI, we can use this clear and bright screen to provide the most beautiful imagery.



Smart Power

A built-in ambient light sensor automatically adjusts the screen brightness according to current light conditions. This display is Energy Star certified to help you protect the environment and save costs.



Smart whiteboard

GoBoard uses high-level touch to restore natural writing habits by enabling pen tip writing, cap erasing, finger moving objects and palm erasing, while also providing teachers and students with a wide range of teaching tools such as protractors, triangles and rulers.



Wireless transmission

GoBoard supports Webcast, Miracast, Dongle Transfer, Hisenseshare, etc. Dual WiFi modules simultaneously support a screen-sharing hotspot and Wi-Fi network connection. With low image latency, you'll enjoy a faster, more stable connection and a superb screen-sharing experience.



Google Integration

With Google Education, GoBoard enables users to easily access Google applications such as Google Classroom, Google Chrome, Play Store, Gmail, Google Drive, Google Docs, etc. This helps teachers save time managing their classroom and assignments.



Safer and Enhanced Experience

Android 13 works to keep your data safe and secure. With Android 13, you have more control over what information apps can and can't access. Devices that work better together, enhance your messaging, audio and multitasking experiences.



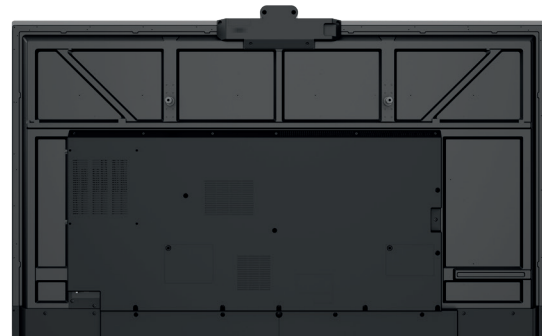
Dolby Atmos

Movies, TV shows, sports, music – the entertainment you love is even better when you hear it in Dolby Atmos. Its crystal clarity, easy-to-hear dialogue, great detail, and realistic surround-sound effects all come together to dial up the impact of your favourite scenes and events.



Integrated 4K camera

The integrated 4K GOBOARD camera is designed with a physical cover and a working light to ensure the privacy of attendees.



Specifications

Interactive Display Panel

LCD Size	65"
Backlight Type	D-LED
Resolution	3840x2160(pixels)
Brightness	350nits
Contrast Ratio	1200:1(typ.)
Response Time	8ms (typ.)
Refreshing Frequency	60Hz
Viewing Angle	178°(H) / 178°(V)
Lifetime	50,000 hrs (min.)
Color Gamut(X% NTSC)	72%
Display Colors	1.07B(10bit)

System

CPU	Architecture - ARM A73(4) +A53(4) Working Frequency - 2.2GHz + 2.0GHz
GPU	MaliG52
RAM	4GB
ROM	64GB
OS	Android 13.0
Language	Chinese, English, Polish, German, French, Italian, Spanish, Finnish, Norwegian, Swedish, Thai, Indonesian, Japanese

Power

Power Requirements	AC 100 V ~ 240 V, 50/60 Hz
Power Consumption Without OPS	240W (Max)
Standby Consumption	<0.5W
Built In Speaker	2x15W+20W

Connectivity

OPS Power	DC 12V/5A
Wi-Fi	IEEE 802.11a/b/g/n/ac/ax(2.4G and 5G) IEEE 802.11a/b/g/n/ac(2.4G and 5G)
Bluetooth	BT5.1
NFC	Yes
Camera	Yes
Input	HDMI (2.0) IN x3 OPS (Optional) x1 LAN x1 (1000baseT R) USB3.0 x3 Type-C x1 (Support PD 65W) Touch x1 Audio In x1 RS-232 In x1(RJ45)
Output	RS232 OUT x1 (RJ45) HDMI Out x1 S/PDIF Out x1 Audio Out x1

Touch

Sensing Type	Infrared Touch Frame
Surface Protection	Anti-Glare Glass
Infrared Touch	≤20 points
Touch Accuracy	90%(±1mm)
Theory Clicks	Unlimited
Minimum Touch Object	≥2mm
Writing Height	< 1.5mm (Support Four-Level Recognition)
Windows 10/8/7,Android	Multi Touch

Physical

Product Size (W x H x D)	1488 x 935 x 122mm 58.6 x 36.8 x 4.8 inch
Package Size (W x H x D)	1629 x 1040 X 240mm 64.1 x 40.9 x 9.4inch
Net Weight	35kg / 77.18lbs
Packed Weight	45kg / 99.23lbs
Housing Material	Front Shell: Aluminium Rear Shell: Plastic
Housing Colour	Black + Tarnish
VESA	600 x 400mm, 4-M8 Screw

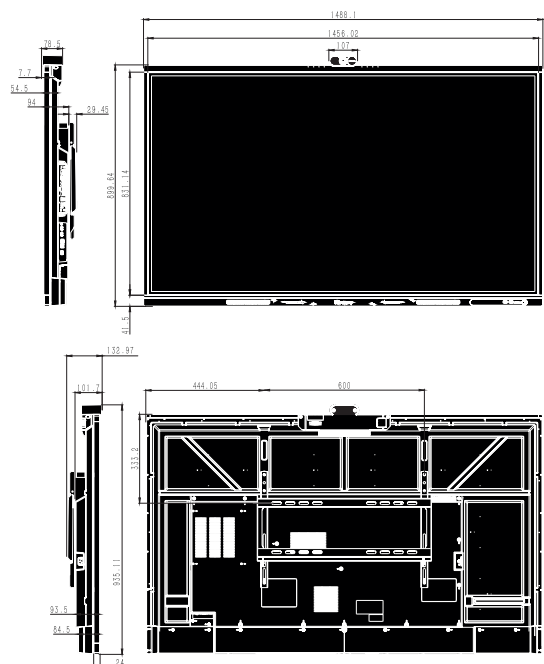
Certification

Standard Certification CB/CE/ERP/South Africa Efficiency/
cTUVus/CEC/FCC/ICASA/Energy Star



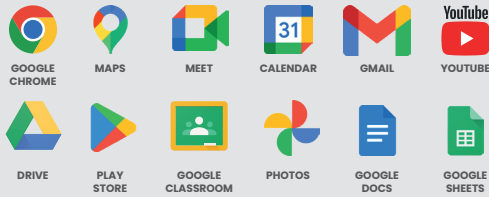
Dimensions

65" 1488^W x 935^H x 122^D mm / 58.6 x 36.8 x 4.8 inch
35 kg / 77.18 lbs



GoBoard

Native Apps



75MR6DE-E

75" ADVANCED INTERACTIVE DISPLAY

Hisense Interactive Display solutions deliver unrivalled performance and market leading value. Combining the power of a digital display, tablet, electronic whiteboard and video conference device, Hisense delivers the ultimate all-in-one display solution. Superior processors and the latest touch technology provide best-in-class user experiences while seamless wireless integration makes collaboration both simple and engaging. The NEW 75MR6DE-E GoBoard display features Google Certification and Android 13 operating system.

Highlights



4K Ultra HD Panel / 4K UI

The 4K Ultra HD picture quality ensures perfect colour and rich details in all possible surroundings. In addition to the 4K screen as always, we bring a 4K user interface for the GoBoard. With the 4K UI, we can use this clear and bright screen to provide the most beautiful imagery.



Smart Power

A built-in ambient light sensor automatically adjusts the screen brightness according to current light conditions. This display is Energy Star certified to help you protect the environment and save costs.



Smart whiteboard

GoBoard uses high-level touch to restore natural writing habits by enabling pen tip writing, cap erasing, finger moving objects and palm erasing, while also providing teachers and students with a wide range of teaching tools such as protractors, triangles and rulers.



Wireless transmission

GoBoard supports Webcast, Miracast, Dongle Transfer, Hisenseshare, etc. Dual WiFi modules simultaneously support a screen-sharing hotspot and Wi-Fi network connection. With low image latency, you'll enjoy a faster, more stable connection and a superb screen-sharing experience.



Google Integration

With Google Education, GoBoard enables users to easily access Google applications such as Google Classroom, Google Chrome, Play Store, Gmail, Google Drive, Google Docs, etc. This helps teachers save time managing their classroom and assignments.



Safer and Enhanced Experience

Android 13 works to keep your data safe and secure. With Android 13, you have more control over what information apps can and can't access. Devices that work better together, enhance your messaging, audio and multitasking experiences.



Dolby Atmos

Movies, TV shows, sports, music – the entertainment you love is even better when you hear it in Dolby Atmos. Its crystal clarity, easy-to-hear dialogue, great detail, and realistic surround-sound effects all come together to dial up the impact of your favourite scenes and events.



Eye comfort

Certified by TÜV Rheinland, Hisense GoBoard has been proven to effectively protect your eyes by reducing the blue light ratio, even after long times looking at this screen.



Specifications

Interactive Display Panel

LCD Size	75"
Backlight Type	D-LED
Resolution	3840x2160(pixels)
Brightness	350nits
Contrast Ratio	1200:1(typ.)
Response Time	8ms (typ.)
Refreshing Frequency	60Hz
Viewing Angle	178°(H) / 178°(V)
Lifetime	50,000 hrs (min.)
Color Gamut(X% NTSC)	72%
Display Colors	1.07B(10bit)

System

CPU	Architecture - ARM A73(4) +A53(4) Working Frequency - 2.2GHz + 2.0GHz
GPU	MaliG52
RAM	4GB
ROM	64GB
OS	Android 13.0
Language	Chinese, English, Polish, German, French, Italian, Spanish, Finnish, Norwegian, Swedish, Thai, Indonesian, Japanese

Power

Power Requirements	AC 100 V ~ 240 V, 50/60 Hz
Power Consumption Without OPS	350W (Max)
Standby Consumption	<0.5W
Built In Speaker	2x15W+20W

Connectivity

OPS Power	DC 12V/5A
Wi-Fi	IEEE 802.11a/b/g/n/ac/ax(2.4G and 5G) IEEE 802.11a/b/g/n/ac(2.4G and 5G)
Bluetooth	BT5.1
NFC	Yes
Camera	No
Input	HDMI(2.0) IN x3 OPS (Optional) x1 LAN x1 (1000baseT R) USB3.0 x3 Type-C x1 (Support PD 65W) Touch x1 Audio In x1 RS-232 In x1(RJ45)
Output	RS232 OUT x2 (RJ45) HDMI Out x1 S/PDIF Out x1 Audio Out x1

Touch

Sensing Type	Infrared Touch Frame
Surface Protection	Anti-Glare Glass
Infrared Touch	≤20 points
Touch Accuracy	90%(±1mm)
Theory Clicks	Unlimited
Minimum Touch Object	≥2mm
Writing Height	< 1.5mm (Support Four-Level Recognition)
Windows 10/8/7,Android	Multi Touch

Physical

Product Size (W x H x D)	1709.9 x 1024.4 x 118.8mm 67.3 x 40.3 x 4.7 inch
Package Size (W x H x D)	1850 x 1165 x 240mm 72.8 x 45.9 x 9.4 inch
Net Weight	45.5kg / 100.3 lbs
Packed Weight	59.7kg / 131.6 lbs
Housing Material	Front Shell: Aluminium Rear Shell: Plastic
Housing Colour	Black + Tarnish
VESA	600 x 600mm, 4-M8 Screw

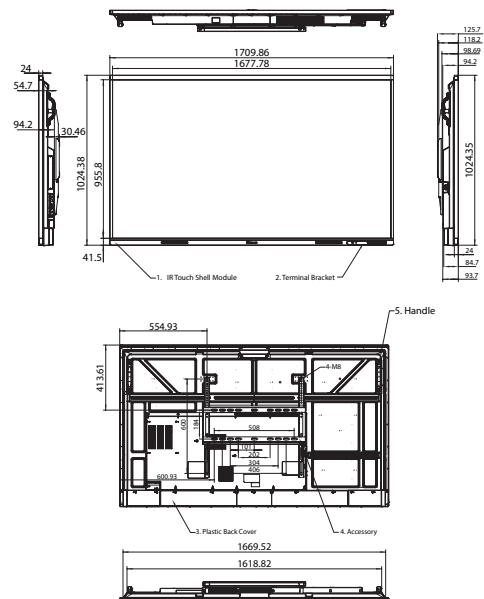
Certification

Standard Certification CB/CE/ERP/South Africa Efficiency/
cTUVus/CEC/FCC/ICASA/Energy Star



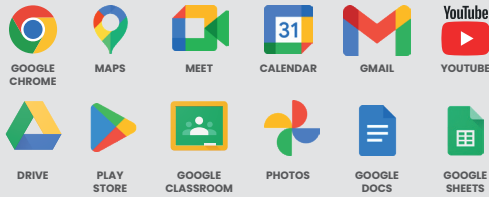
Dimensions

75" 1710^W x 1025.5^H x 126^D mm / 67.3 x 40.4 x 5 inch
45.3 kg / 99.89 lbs



GoBoard

Native Apps



86MR6DE-E

86" ADVANCED INTERACTIVE DISPLAY

Hisense Interactive Display solutions deliver unrivalled performance and market leading value. Combining the power of a digital display, tablet, electronic whiteboard and video conference device, Hisense delivers the ultimate all-in-one display solution. Superior processors and the latest touch technology provide best-in-class user experiences while seamless wireless integration makes collaboration both simple and engaging. The NEW 86MR6DE-E GoBoard display features Google Certification and Android 13 operating system.

Highlights



4K Ultra HD Panel / 4K UI

The 4K Ultra HD picture quality ensures perfect colour and rich details in all possible surroundings. In addition to the 4K screen as always, we bring a 4K user interface for the GoBoard. With the 4K UI, we can use this clear and bright screen to provide the most beautiful imagery.



Smart Power

A built-in ambient light sensor automatically adjusts the screen brightness according to current light conditions. This display is Energy Star certified to help you protect the environment and save costs.



Smart whiteboard

GoBoard uses high-level touch to restore natural writing habits by enabling pen tip writing, cap erasing, finger moving objects and palm erasing, while also providing teachers and students with a wide range of teaching tools such as protractors, triangles and rulers.



Wireless transmission

GoBoard supports Webcast, Miracast, Dongle Transfer, Hisenseshare, etc. Dual WiFi modules simultaneously support a screen-sharing hotspot and Wi-Fi network connection. With low image latency, you'll enjoy a faster, more stable connection and a superb screen-sharing experience.



Google Integration

With Google Education, GoBoard enables users to easily access Google applications such as Google Classroom, Google Chrome, Play Store, Gmail, Google Drive, Google Docs, etc. This helps teachers save time managing their classroom and assignments.



Safer and Enhanced Experience

Android 13 works to keep your data safe and secure. With Android 13, you have more control over what information apps can and can't access. Devices that work better together, enhance your messaging, audio and multitasking experiences.



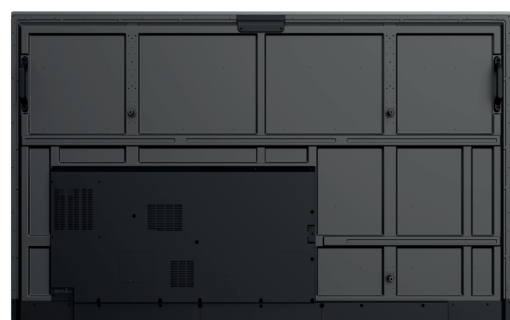
Dolby Atmos

Movies, TV shows, sports, music – the entertainment you love is even better when you hear it in Dolby Atmos. Its crystal clarity, easy-to-hear dialogue, great detail, and realistic surround-sound effects all come together to dial up the impact of your favourite scenes and events.



Eye comfort

Certified by TÜV Rheinland, Hisense GoBoard has been proven to effectively protect your eyes by reducing the blue light ratio, even after long times looking at this screen.



Specifications

Interactive Display Panel

LCD Size	86"
Backlight Type	D-LED
Resolution	3840x2160(pixels)
Brightness	350nits
Contrast Ratio	4000:1(typ.)
Response Time	8ms (typ.)
Refreshing Frequency	60Hz
Viewing Angle	178°(H) / 178°(V)
Lifetime	50,000 hrs (min.)
Color Gamut(X% NTSC)	72%
Display Colors	1.07B(10bit)

System

CPU	Architecture - ARM A73(4) +A53(4) Working Frequency - 2.2GHz + 2.0GHz
GPU	MaliG52
RAM	4GB
ROM	64GB
OS	Android 13.0
Language	Chinese, English, Polish, German, French, Italian, Spanish, Finnish, Norwegian, Swedish, Thai, Indonesian, Japanese

Power

Power Requirements	AC 100 V ~ 240 V, 50/60 Hz
Power Consumption Without OPS	430W (Max)
Standby Consumption	<0.5W
Built In Speaker	2x15W+20W

Connectivity

OPS Power	DC 12V/5A
Wi-Fi	IEEE 802.11a/b/g/n/ac/ax(2.4G and 5G) IEEE 802.11a/b/g/n/ac(2.4G and 5G)
Bluetooth	BT5.1
NFC	Yes
Camera	No
Input	HDMI(2.0) IN x3 OPS (Optional) x1 LAN x1 (1000baseT R) USB3.0 x3 Type-C x1 (Support PD 65W) Touch x1 Audio In x1 RS-232 In x1(RJ45)
Output	RS232 OUT x2 (RJ45) HDMI Out x1 S/PDIF Out x1 Audio Out x1

Touch

Sensing Type	Infrared Touch Frame
Surface Protection	Anti-Glare Glass
Infrared Touch	≤20 points
Touch Accuracy	90%(±1mm)
Theory Clicks	Unlimited
Minimum Touch Object	≥2mm
Writing Height	< 1.5mm (Support Four-Level Recognition)
Windows 10/8/7,Android	Multi Touch

Physical

Product Size (W x H x D)	1954.7 x 1162.1 x 118.1mm 77 x 45.8 x 4.7 inch
Package Size (W x H x D)	2095 x 1303 x 240mm 82.5 x 51.3 x 9.4 inch
Net Weight	58.7kg / 129.4lbs
Packed Weight	76.2kg / 168lbs
Housing Material	Front Shell: Aluminium Rear Shell: Plastic
Housing Colour	Black + Tarnish
VESA	1000 x 600mm, 4-M8 Screw

Certification

Standard Certification CB/CE/ERP/South Africa Efficiency/ cTUVus/CEC/FCC/ICASA/Energy Star



Dimensions

86" 1955^W x 1162.5^H x 126^D mm / 77 x 45.8 x 5 inch
58 kg / 127.89 lbs

