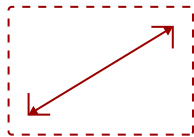


EP5542 - 55" DISPLAY, 3840 X 2160 RESOLUTION, 400 CD/M2 BRIGHTNESS, 16/7

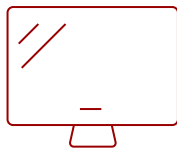
Key Features

REFURBISHED

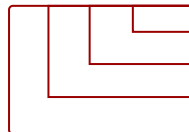
- Ultra HD Resolution
- Embedded SoC Platform
- Free-standing Design
- Optional Content Management Software
- Anti-Scratch, Anti-Glare Glass Faceplate



55
DISPLAY



MVA
PANEL



RESOLUTION



Product Description

The ViewSonic® EP5542 is a 55" 4K Ultra HD all-in-one free-standing digital ePoster kiosk with a sleek, slim design. Great for grabbing attention in busy, high-traffic areas, the EP5542 comes with a scratch-proof tempered glass faceplate for added durability. Featuring an IPS-type panel, 4K Ultra HD resolution, 178°/178° wide-angle viewing, 400-nit brightness, 1,300:1 contrast ratio, and dual 10W stereo speakers, the EP5542 delivers customized multimedia messaging with vivid clarity. Photo and video files can be played back using the embedded Quad-core media player and 16GB of internal memory, or add your own media player using the convenient media player cradle inside the lockable security door.

Specifications

More Information

UPC

766907006896

| | |
|------------------------------------|---|
| Screen Size | 55 |
| Viewable Area (in.) | 55 |
| Display Resolution | 3840 x 2160 |
| Light Source | DLED |
| Orientation | Portrait |
| Static Contrast Ratio | 1,300:1 |
| Brightness | 400 cd/m2 |
| Colors | 1.07B |
| Viewing Angles | 178º horizontal, 178º vertical |
| Backlight Life (Hours) | 30,000 |
| Response Time (Typical GTG) | 9ms |
| Panel Surface | Anti-Glare 3H, Haze = 2%, 7H / 4mm Tempered glass |
| Panel Type | MVA |
| Aspect Ratio | 16:9 |
| Operation Rating | 16/7 |
| Internal Speakers | 10-watt (x2) |
| 3.5mm Audio In | 1 |
| 3.5mm Audio Out | 1 |
| HDMI 2.0 (with HDCP 2.2) | 3 |
| DisplayPort | 1 |
| Ethernet LAN (RJ45) | 1 |
| VGA | 1 |
| RS232 In | 1 |
| USB 2.0 Type A | 3 |
| CPU | Multi-CPU (ARM Cortex A73 x 2 + Cortex A53 x 2) |
| GPU | G51MP2 |
| Operating System | Android™ 8.0 |
| RAM | 2GB |
| Memory Type | DDR4 |
| Storage Capacity | 16GB |
| Storage Type | eMMC |
| Voltage | 100-240 VAC +/- 10% Wide Range, 50-60Hz +/-3 Hz |
| Consumption (max) | 149W |
| Consumption (typical) | 126W |
| Stand-by | <0.5W |
| Temperature | 32-104º F (0 - 40º C) |

| | |
|----------------------------------|---|
| Humidity (non-condensing) | 10-85% |
| Gross (lbs) | 164.7 |
| Net (lbs) | 138.2 |
| Gross (kg) | 74.7 |
| Net (kg) | 62.7 |
| Packaging (in.) | 38.2 x 80.1 x 24.0 |
| Physical (in.) | 30.3 x 73.6 x 17.7 |
| Packaging (mm) | 970.0 x 2034.0 x 609.0 |
| Physical (mm) | 768.5 x 1870.0 x 400.0 |
| Regulations | cTUVus, FCC, Energy Star, CE, CB, RoHS, ErP, EEI, WEEE, BSMI |
| Package Contents | EP5542 Multimedia Digital Poster, Remote Control with batteries, Quick Start Guide, Power Cable |
| Recycle/Disposal | Please dispose of in accordance with local, state or federal laws. |
| Warranty | One-year limited warranty on parts, labor and backlight |

UPC: 766907006896



Contact Sales

ViewSonic.com

888.881.8781

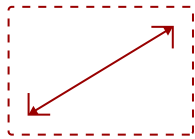
email:

salesinfo@viewsonic.com

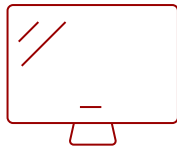
EP5542T - 55" DISPLAY, 3840 X 2160 RESOLUTION, 450 CD/M2 BRIGHTNESS, 16/7

Key Features

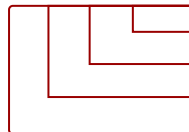
- Ultra HD Resolution
- Embedded SoC Platform
- Free-standing Design
- Interactive On-Demand Messaging
- Optional Content Management Software
- Anti-Scratch, Anti-Glare Glass Faceplate



55
DISPLAY



MVA
PANEL



RESOLUTION



Product Description

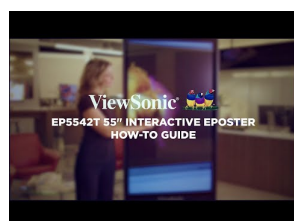
The ViewSonic® EP5542T is a 10-point interactive, 55" 4K Ultra HD all-in-one free-standing digital ePoster kiosk with a sleek, slim design. Great for grabbing attention in busy, high-traffic areas, the EP5542T comes with a scratch-proof tempered glass faceplate for added durability. Featuring an IPS-type panel, 4K Ultra HD resolution, 178°/178° wide-angle viewing, 400-nit brightness, 1,300:1 contrast ratio, and dual 10W stereo speakers, the EP5542T delivers customized multimedia messaging with vivid clarity. Photo and video files can be played back using the embedded Quad-core media player and 16GB of internal memory, or add your own media player using the convenient media player cradle inside the lockable security door. Works with optional cloud-based Content Management Software.

Specifications

| | |
|------------------------------------|---|
| UPC | 766907006902 |
| Screen Size | 55 |
| Viewable Area (in.) | 55 |
| Display Resolution | 3840 x 2160 |
| Light Source | DLED |
| Orientation | Portrait |
| Static Contrast Ratio | 4,000:1 |
| Brightness | 450 cd/m2 |
| Colors | 1.07B |
| Viewing Angles | 178º horizontal, 178º vertical |
| Backlight Life (Hours) | 30,000 |
| Response Time (Typical GTG) | 9ms |
| Panel Surface | Anti-Glare 3H, Haze = 2%, 7H / 4mm Tempered glass |
| Panel Type | MVA |
| Aspect Ratio | 16:9 |
| Operation Rating | 16/7 |
| Internal Speakers | 10W (x2) |
| 3.5mm Audio In | 1 |
| 3.5mm Audio Out | 1 |
| SPDIF Audio Out | 1 |
| DisplayPort | 1 |
| Ethernet LAN (RJ45) | 1 |
| HDMI 2.0 In | 3 |
| VGA | 1 |
| RS232 In | 1 |
| USB 2.0 Type A | 3 |
| USB 2.0 Type B Out | 2 |
| Media Player Type | Media Player |
| CPU | Multi-CPU (ARM Cortex A73 x 2 + Cortex A53 x 2) |
| GPU | G51MP2 |
| Operating System | Android™ 8.0 |
| RAM | 2GB |
| Memory Type | DDR4 |
| Storage Capacity | 16GB |
| Storage Type | eMMC |
| Touch Technology | Infrared |

| | |
|----------------------------------|---|
| Touch Points | 10-Point Touch |
| Touch Response Time | <= 10ms |
| OS Compatibility | Windows XP/7/8/10, Linux, Mac, Android |
| Voltage | 100-240 VAC +/- 10% Wide Range, 50-60Hz +/-3 Hz |
| Consumption (max) | 149W |
| Consumption (typical) | 126W |
| Stand-by | <0.5W |
| Off | <0.3W |
| Temperature | 32-104° F (0 - 40° C) |
| Humidity (non-condensing) | 10-85% |
| Gross (lbs) | 164.7 |
| Net (lbs) | 138.2 |
| Gross (kg) | 74.7 |
| Net (kg) | 62.7 |
| Packaging (in.) | 38.2 x 80.1 x 24.0 |
| Physical (in.) | 30.3 x 73.6 x 17.7 |
| Packaging (mm) | 970.0 x 2034.0 x 609.0 |
| Physical (mm) | 768.5 x 1870.0 x 400.0 |
| Picture | Picture Mode, Contrast, Brightness, Hue, Sharpness, Saturation, Anti-Flicker, Backlight, Clock, Phase, Horizontal Position, Vertical Position, Auto Tune, Color temperature, Bluelight, Zoom Mode, OverScan, Image NR, ECO Mode |
| Sound | Sound Mode, Bass, Treble, Balance, Surround, Alone |
| Setting | Auto Source Detect, Menu Tim, Date, Time, Off Timer, On Timer, Power On Source, No Signal Standby, HDMI EDID Version, HDMI with One Wire, HDMI ARC |
| Lock | Set Password, System ID, Power Save, Auto Play, Slideshow, Pixel Shift, Wake up On Lan, Wake up from video, Power On Logo, Change Logo, Restore To Default |
| Regulations | cTUVus, FCC, Energy Star, CE, CB, RoHS, ErP, EEI, WEEE, BSMI |
| Package Contents | EP5542T Multimedia Digital Poster, Remote Control with batteries, Quick Start Guide, Power Cable |
| Recycle/Disposal | Please dispose of in accordance with local, state or federal laws. |
| Warranty | One-year limited warranty on parts, labor and backlight |

UPC: 766907006902



Contact Sales

[ViewSonic.com](https://www.viewsonic.com)

888.881.8781

email: salesinfo@viewsonic.com